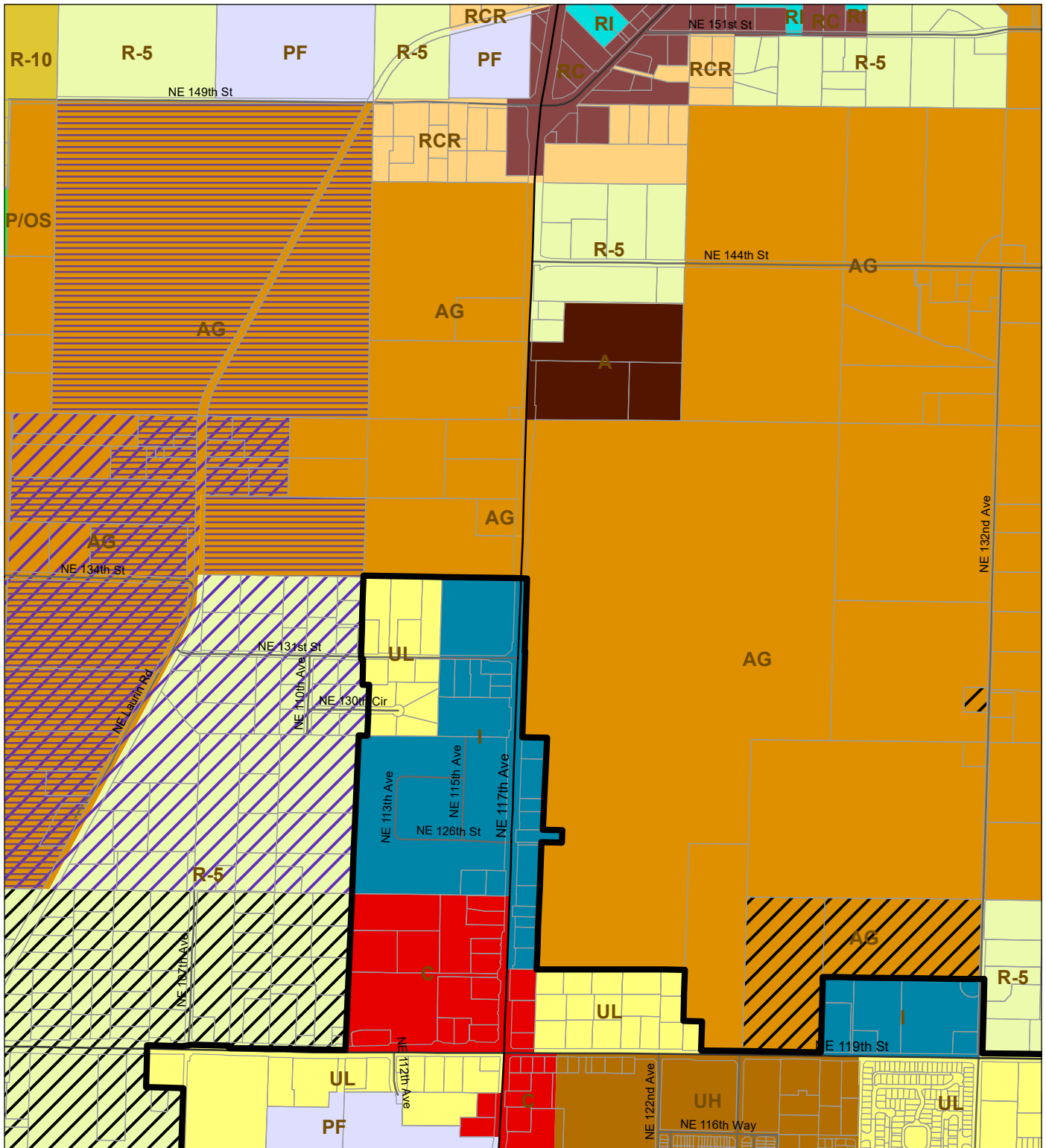


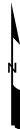
# Exhibit 3 - Proposed Plan Map Designations



## Proposed Comprehensive Plan Change - from Rural Industrial Land Bank to Agriculture



proud past, promising future  
**CLARK COUNTY**  
 WASHINGTON  
 Geographic Information System



NOTE: Information shown on this map was collected from several sources.  
 Clark County accepts no responsibility for any inaccuracies that may be present.

Printed on: Sep 26, 2019  
 Project: \\olympus\GIS\Data\Ops\Planning\Complan\FutureComplanZoning\_Albrecht\FutureComplan.mxd

### Comprehensive Plan

- Urban Low Density Residential (UL)
- Urban High Density Residential (UH)
- Commercial (C, COM)
- Industrial (I, IND)
- Public Facility (PF)
- Rural-5 (R-5)

Rural-10 (R-10)

- Rural Center Residential (RCR)
- Rural Commercial (RC)
- Rural Industrial (RI)
- Agriculture (AG)
- Parks/Open Space (P/OS)
- Airport (A)

### Comprehensive Plan Overlay

- Urban Reserve
- Railroad Industrial Urban Reserve
- Freight Rail Dependent Use

### Urban Growth Area



Council Hearing 11/12/19